

Vitamin D in Term Newborns: Relation with Maternal Concentrations and Birth Weight

Carmem U.P. Esmeraldo^a Maria Eliana P. Martins^a Evanira R. Maia^a
Jéssica Lissandra A. Leite^a José Lucas S. Ramos^b Jucier Gonçalves Jr^c
Cicera M. Neta^c Fabíola Isabel Suano-Souza^{d, e} Roseli O.S. Sarni^d

^aPediatrics Department of Federal University of Cariri, Juazeiro do Norte, Brazil; ^bHigher School of Sciences of the Santa Casa de Misericórdia de Vitória, Vitória, Brazil; ^cFaculty of Juazeiro do Norte, Juazeiro do Norte, Brazil; ^dPediatrics Department of ABC Faculty of Medicine, Santo André, São Paulo, Brazil; ^ePediatrics Department of Federal University of São Paulo, São Paulo, Brazil

Keywords

Vitamin D · Newborn · Pregnant women · Postpartum period

Abstract

Objective: To evaluate vitamin D serum levels of term newborns and relate them to maternal concentrations and birth weight. **Methods:** Cross-sectional study carried out with 225 mothers and their term newborns. Data collected were maternal health, prenatal care, gestational, and anthropometric data of the newborns. The following laboratory tests were performed: serum levels of 25(OH)D, calcium, phosphorus, magnesium, and alkaline phosphatase. **Results:** Of the 225 newborns included in the study, 119 (52.9%) were males, the mean birth weight was $3,198 \pm 421.4$ g, and the gestational age was 39.1 ± 1.1 weeks. Of these, 20 (8.9%) were small and 12 (5.3%) were large for gestational age. A 25(OH)D sufficiency was found in 25.8% of mothers and 92% of newborns. The mean 25(OH)D concentrations of newborns was higher than that of the mothers 48.7 ± 15.2 ng/mL vs. 26.0 ± 6.7 ng/dL ($p < 0.001$), correlating inversely with birth weight ($r = -0.249$; $p < 0.001$). Small for gestational age (SGA) newborns had higher concentrations of 25(OH)D compared to adequate

and large for age ($p < 0.001$). **Conclusion:** In conclusion, this study showed strong positive correlation between maternal and neonatal 25(OH)D concentrations, with higher values in newborns. The highest 25(OH)D concentrations were found in SGA term infants. We speculated these findings could be influenced by newborn body composition.

© 2019 S. Karger AG, Basel

Introduction

Vitamin D is identified as a micronutrient and is now also recognized as a prohormone involved in bone metabolism and the functioning of the immune, respiratory, endocrine, and cardiovascular systems [1, 2].

The maintenance of its blood concentrations depends predominantly on the endogenous production from skin sun exposure and, to a lesser extent, dietary intake. Ethnicity (skin pigmentation), latitude, season, use of sunscreen, and body mass index also influence vitamin D serum levels (25[OH]D) [2].

Appropriate concentrations of 25(OH)D during pregnancy influence the development and maturation of fetal tissues and systems through their action on gene expres-

sion. Vitamin D deficiency at this stage can lead to complications for women, such as gestational diabetes and preeclampsia; and fetuses, such as intrauterine growth restriction, prematurity, insulin resistance, and regulatory T-cell impairment [3, 4].

The transfer of 25(OH)D to the fetus occurs primarily through the placenta and is more intense in the last trimester of gestation, since the placenta's receptors produce the enzyme that converts 25(OH)D into 1,25(OH)₂D, its active form. There is a strong correlation between maternal and cord blood 25(OH)D concentrations [4].

In a recent meta-analysis, the authors found association of daily medical supplementation of around 2,000 IU vitamin D during pregnancy with a lower risk to small infants for gestational age and better postnatal growth of these children [5].

Vitamin D deficiency has reportedly had a high global prevalence among pregnant women and their newborns. A systematic review by Saraf et al. [6] showed an overall prevalence of 25(OH)D concentrations <20 ng/mL of 54 and 75% for mothers and their newborns, respectively.

The World Health Organization [7] and Brazil do not recommend universal supplementation of vitamin D during pregnancy. Nevertheless, studies in our country suggest a high percentage of deficiency/insufficiency [8–10].

Given the importance of vitamin D during pregnancy, the repercussions of its deficiency on maternal and infant health, and because Brazil is a sunny country that does not recommend universal supplementation, we decided to conduct this study which aims to describe 25(OH)D serum levels of term newborns and relate them to maternal concentrations and birth weight.

Materials and Methods

A cross-sectional study was performed between October and December 2016 in a maternity hospital of Crato, State of Ceará (latitude 07° 14' 03" S). The Human Research Ethics Committee of the ABC Faculty of Medicine, Santo André approved the study under number 1.813.560. A recently published study with the same sample described maternal 25 (OH)D concentrations and associated nutritional status with the presence of diseases during gestation [11].

The sample included, consecutively, 225 term newborns and their mothers. Newborns who were sent to the neonatal intensive care unit, with severe malformations, genetic syndromes, and neonatal hypoxia were excluded.

Mothers were submitted to a standardized questionnaire with information on socioeconomic conditions, skin color (self-reported), sun exposure, photoprotection, diseases during pregnancy,

and use of vitamin/mineral supplements. The prenatal card was checked for complete information about laboratory tests and anthropometric measurements.

Weight and height data were used to calculate the pregestational body mass index (BMI, kg/m²), which was classified as underweight (<18.5 kg/m²), normal (18.5–24.9 kg/m²), overweight (25–29.9 kg/m²), and obesity (≥30 kg/m²). Weight gain during pregnancy was calculated and classified as low, adequate, and high [12].

Information on weight, length, and head circumference of the newborns were collected within the first 24 h after delivery. The gestational age was calculated according to the date of the last menstruation; alternatively, we employed the first-trimester ultrasonography data and, finally, the newborn's clinical evaluation [13]. The newborns were classified by gestational age, using INTERGROWTH-21st [14].

Blood samples were taken within 24 h after delivery. We collected 5 mL of blood through peripheral venipuncture of the mothers and their newborns, which were photoprotected, refrigerated, and sent to the local clinical laboratory, where they were centrifuged and serum levels of 25(OH)D (25[OH]D₂ and 25[OH]D₃; Electrochemiluminescence, with UniCel DXI 800 Immunoassay System, Beckman Coulter®), Calcium, Phosphorus, Magnesium, and Alkaline Phosphatase (Reflectance Spectrophotometry, Vitros 5600 Integrated System, Ortho-Clinical Diagnostics, Raritan, NJ, USA) were dosed. The 25(OH)D serum concentrations <20 ng/mL were defined as deficiency; 20–30 ng/mL, as insufficiency; and >30 ng/mL, as sufficiency [13]. All calculations followed the best clinical practice. The mean of 19.9 ng/mL (SD 0.948 ng/mL and an intra-control CV of 4.8%) was the referred reproducible value to measure the 25(OH)D. For the same parameter, the intermediate precision was 19.9 ng/mL (SD 1.23 ng/mL and an intra-control CV of 6.2%). The lowest detectable value (sensitivity) of the method was 1.25 ng/dL.

Statistical Analysis

A spreadsheet was created in Excel®, containing information on identification, general characteristics, data from the questionnaires on mother and newborns, anthropometric data, and laboratory test results. The spreadsheet was revised, consolidated, and imported into the Statistical Package for Social Science, version 25.0 (IBM®) for statistical analyses. The categorical variables were shown as absolute number and percentage, compared using the chi-square test; the continuums were tested for their normality with Shapiro-Wilk test, showed as mean (SE) and compared by Student *t* test. Pearson's correlation was used to assess the correlation between maternal, newborn, and birth weight 25(OH)D serum levels. Statistical significance was set at *p* < 0.05.

Based on data from a previous study similar to this [15], the number of included newborns has the power to detect a difference of 3 ng/mL of 25(OH)D, with a CI of 95%.

Results

Of the 225 newborns included in the study, 119 (52.9%) were males, with a mean birth weight of 3,198 ± 421.4 g (variation: 2,030–4,115 g) and gestational age of 39.1 ± 1.1

Table 1. General characteristics and serum levels of 25(OH)D, calcium, phosphorus, magnesium, and alkaline phosphatase of newborns (*n* = 225)

Variable	<i>n</i> (%) or mean \pm SD
Gender	
Female	106 (47.1)
Male	119 (52.9)
Birth weight, g	3,198 \pm 421.4
Length at birth, cm	48.1 \pm 1.9
Classification	
Low weight	11 (4.9)
Adequate weight	208 (92.4)
High weight	6 (2.7)
Head circumference, cm	34.4 \pm 1.3
Gestational age, weeks	39.1 \pm 1.1
Classification	
Small	20 (8.9)
Adequate	193 (85.8)
Large	12 (5.3)
Vitamin D metabolism	
25(OH)D	48.7 \pm 15.2
<20 ng/mL	3 (1.3)
20–30 ng/mL	15 (6.7)
>30 ng/mL	207 (92.0)
Calcium, mg/dL	9.2 \pm 0.8
Phosphorus, mg/dL	7.7 \pm 1.8
Magnesium, mg/dL	1.9 \pm 0.5
Alkaline phosphatase, U/L	155.2 \pm 44.7

week (37–41 weeks). Of these, 20 (8.9%) were classified as small (small for gestational age [SGA]) and 12 (5.3%) as large (large for gestational age [LGA]) for gestational age (Table 1).

The mean age of the mothers was 25.6 \pm 6.6 years (variation: 15.3–44.3 years). There was a predominance of dark skin color 178 (79.1%), low education (<4 years) 197 (87.6%), and work in the urban region 127 (56.4%). Most of the women underwent prenatal examination, of which 108 (48.0%) were primiparous. The main complication observed during gestation was urinary tract infection (72, 32%), followed by specific gestational hypertension and gestational diabetes mellitus (Table 2), with smaller rates. There was a predominance of surgical deliveries (164, 72.9%).

Regular sun exposure, use of photoprotection and multivitamin supplement containing vitamin D since of beginning of gestation (cholecalciferol, 250–400 UL/day) were found in 144 (64.0%), 44 (19.6%), and 20 (8.9%) of mothers evaluated, respectively.

Pregestational BMI was 19 (8.5%) for underweight, 49 (21.9%) for overweight, and 28 (12.0%) for obesity.

Weight gain during pregnancy was lower, adequate and higher than recommended in 83 (36.9%), 70 (31.1%), and 71 (31.6%) of the women, respectively (Table 2).

A sufficiency of 25(OH)D (>30 ng/mL) was observed in 58 (25.8%) and 207 (92.0%) of mothers and newborns, respectively (Table 1). The mean of the 25(OH)D serum levels in newborns was higher than that of the mothers: 48.7 \pm 15.2 ng/mL (16.3–100.4 ng/mL) vs. 26.0 \pm 6.7 ng/dL (6.8–52.5 ng/mL), and the mean difference was -22.7 ± 11.5 ng/mL (*p* < 0.001).

A positive and statistically significant correlation was found between the 25(OH)D serum levels of the newborns and their mothers (*r* = 0.697; *p* < 0.001; Fig. 1). Calcium (*r* = 0.093, *p* = 0.164), phosphorus (*r* = -0.017 ; *p* = 0.796), magnesium (*r* = 0.108; *p* = 0.107), and alkaline phosphatase (*r* = 0.068; *p* = 0.308) concentrations were not associated with those of 25(OH)D serum levels in newborns.

The 25(OH)D serum levels of the newborns were inversely correlated with birth weight (*r* = -0.249 ; *p* < 0.001; Fig. 2). Newborns SGA showed higher concentrations of 25(OH)D and alkaline phosphatase compared to the adequate for gestational ages and LGAs (Fig. 3).

Discussion

In this study, we observed that serum levels of 25(OH)D in term newborns were higher and correlated directly with maternal ones. We also observed that SGA newborns have higher levels of 25(OH)D compared to adequate and LGA.

Sun exposure and intake of supplements containing vitamin D are important for 25(OH)D concentrations maintenance in pregnant women and infants. Cutaneous vitamin D synthesis can be impaired depending on small areas of exposed skin in the presence of air pollution and during winter [16] even in tropical countries that are predominantly sunny throughout the year.

Scientific Societies consider concentrations of 25(OH)D higher than 30 ng/mL as baseline sufficiency values during pregnancy [15]. Despite increasing evidence that low concentrations of 25(OH)D in pregnant women are associated with maternal and neonatal complications, such as specific gestational hypertension, gestational diabetes, bacterial vaginosis, prematurity, and restricted intrauterine growth. The World Health Organization does not recommend vitamin D supplementation for all pregnant women. This is justified because vitamin D metabolism has different and that are not yet wholly clarified and

Table 2. Characterization of puerperae included in the study ($n = 225$)

Variable	n (%) or mean \pm SD
Maternal age, years	25.6 \pm 6.6
Paternal age, years	28.9 \pm 7.9
Ethnicity	
White skin	47 (20.9)
Dark skin	178 (79.1)
Maternal work	
Housewife	55 (24.4)
Urban	127 (56.4)
Rural	43 (19.1)
Maternal schooling, full years of study	
<4 years	197 (87.6)
4–8 years	13 (5.8)
>8 years	15 (6.7)
People living in the household	4.6 \pm 2.2
Number of gestations	2.1 \pm 1.6
Primiparous, n (%)	108 (48.0)
Prenatal care visits	7.8 \pm 2.1
Pregestational BMI, kg/m ²	
<18.5	19 (8.5)
18.5–25	128 (57.1)
25–30	49 (21.9)
≥ 30	28 (12.5)
Weight gain during pregnancy	
Adequate	83 (36.9)
Low	70 (31.1)
High	71 (31.6)
Tobacco use	9 (4.0)
Alcohol use	11 (4.9)
Multivitamin with vitamin D (cholecalciferol)	20 (8.9)
Folic acid	198 (88.0)
Iron	204 (90.7)
Regular sun protection	44 (19.6)
Regular sun exposure	144 (64.0)
Hours/days regular sun exposure	1.9 \pm 1.0
Diseases during pregnancy	
Urinary infection	72 (32)
Gestational-specific hypertensive disease	20 (8.9)
Gestational diabetes mellitus	2 (0.9)
Bleeding	17 (7.6)
Type of delivery	
Vaginal	61 (27.1)
Surgical (caesarean)	164 (72.9)
25(OH)D concentrations, ng/mL	26.0 \pm 6.8
25(OH)D concentrations, ng/mL	
<20	43 (19.1)
20–30 ng/mL	124 (55.1)
>30 ng/mL	58 (25.8)

BMI, body mass index; PIH, pregnancy-induced hypertension; GDM, gestational diabetes mellitus.

because further studies are required on the potential adverse events of supplementation, depending on the recommended dose, for both mother and child in the long term [17].

Although our study was carried out with healthy pregnant women from a sunny country, only a quarter of the mothers had sufficient levels of 25(OH)D. In turn, <10% of newborns showed values lower than 30 ng/mL. Serum levels of 25(OH)D of the newborns were higher than those of their mothers. These results are similar to those found by Pena et al. [8] in a study performed with pregnant women with preeclampsia in a Brazilian city with characteristics similar to the one we studied (Recife, Brazil), and in a previous study on the same group, with preterm infants (São Bernardo do Campo, Brazil) [18].

Study conducted in India [19] also found a high percentage of 25(OH)D insufficiency/deficiency in pregnant women and direct correlation between maternal and newborn serum levels. However, the authors observed a higher percentage of insufficiency/deficiency in the newborn compared to the mothers. The high percentage of pregnant women with associated diseases (26% with preeclampsia) and umbilical cord blood collection are some of the factors that may justify the divergent results of the 25(OH)D levels of our study compared to the Indian study.

Vitamin D metabolism in pregnant and lactating women is dynamic and influenced by several factors, among which we highlight the single nucleotide polymorphisms of vitamin D receptor gene (VDR) [20] and vitamin D epimers [21]. Italian study showed association between some maternal VDR polymorphisms with neonatal anthropometric measures and the risk of prematurity [22]. The authors did not evaluate the combined effect of 25(OH)D serum levels with VDR polymorphisms.

Vitamin D epimers such as 3-epi 25(OH)D₃ and 3-epi-1,25α(OH)₂D₃ have increased production during gestation and in infants in the first 3 months of life [23, 24]. While the biological functions of these epimers are not precisely known, recent studies have described that they have affinity for 25(OH)D and 1,25(OH)₂D receptors and may inhibit PTH production [24]. The 3-epi-25-hydroxy-cholecalciferol represents 14 and 25% of total concentrations of 25(OH)D in the umbilical cord and newborns, respectively [25]. Commercial 25(OH)D assays laboratory methods lack the sensitivity to detect these epimers, which may interfere with the interpretation of the results in pregnant women and infants.

Other vitamin D metabolism markers such as calcium, phosphorus, magnesium, and alkaline phosphatase were

Fig. 1. Correlation of maternal and neonatal 25(OH)D (ng/mL) serum levels. Pearson's correlation significance level: all ($r = 0.697$; $p < 0.001$); males ($r = 0.653$; $p < 0.001$); females ($r = 0.746$; $p < 0.001$).

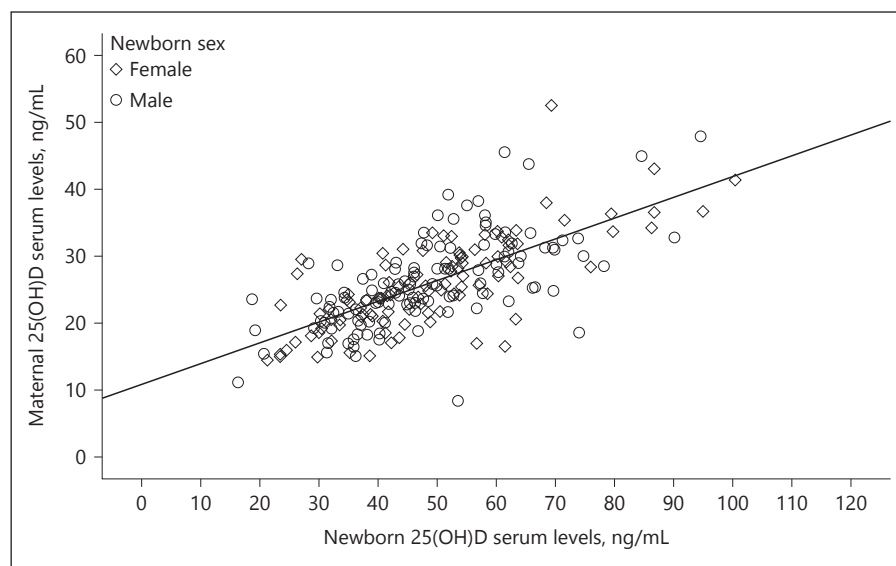
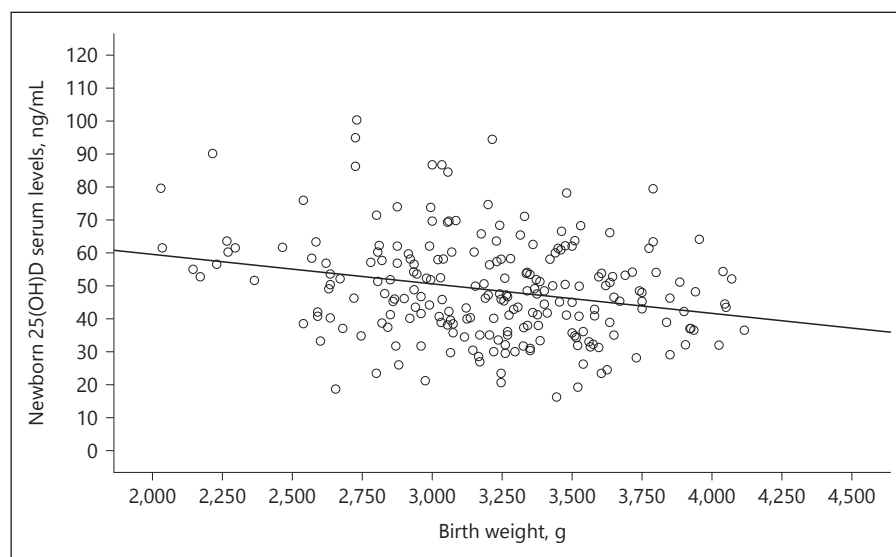


Fig. 2. Correlation of newborn 25(OH)D (ng/mL) serum levels with birth weight. Pearson correlation; $r = -0.249$; $p < 0.001$.



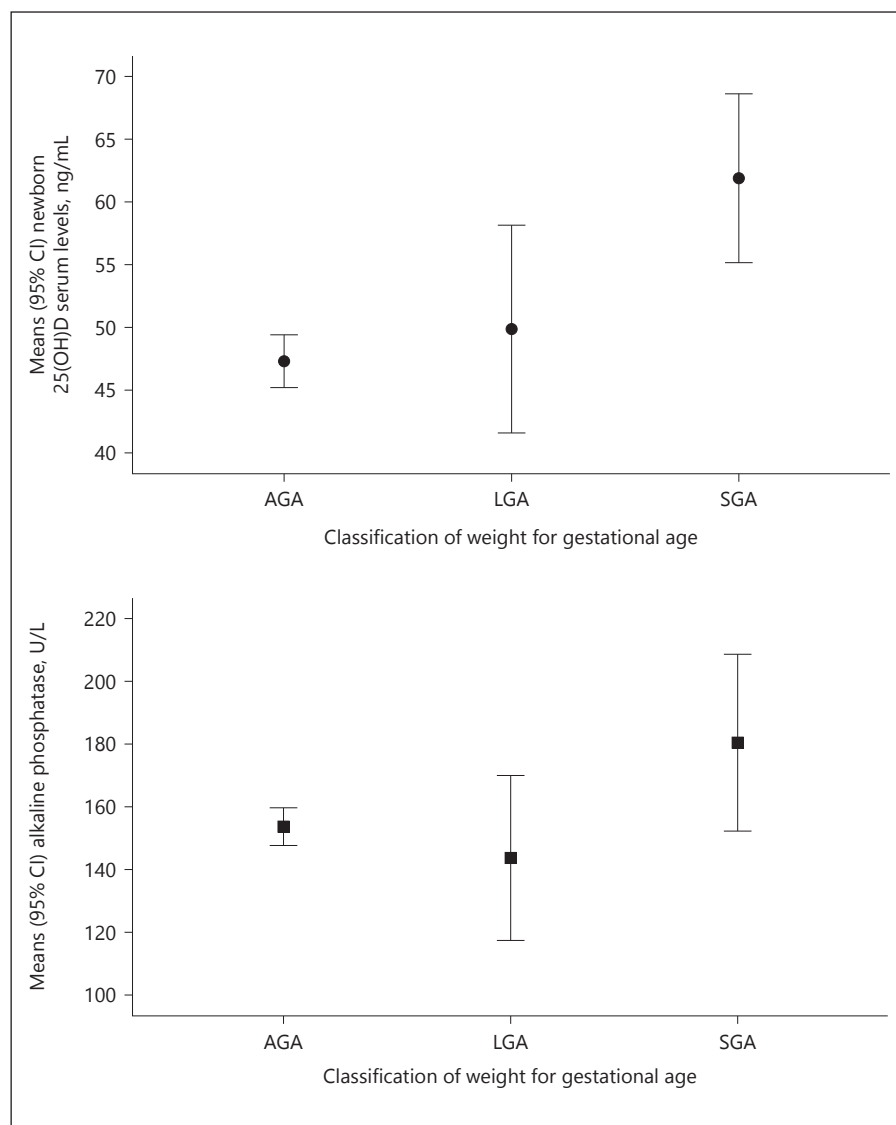
not associated with 25(OH)D concentrations in newborns in this study. Hypocalcemia is the first change observed in newborns with inadequate levels of 25(OH)D; however, they usually occur when concentrations are below 10 ng/mL [15]. Only 2 mothers had values smaller than this and the calcium concentrations in their newborns were normal [26].

Previous studies have shown that lower concentrations of 25(OH)D at the onset and middle of gestation are inversely associated with birth weight and that insufficiency/deficiency increases the risk of restricted intra-uterine growth and newborns SGA [5, 27, 28]. Sarma et

al. [29] found that maternal hypovitaminosis D is associated with shorter femur length at 34 weeks of gestation and lower birth length. However, no significant association was noted between maternal Vitamin D serum levels with birth weight and head circumference of newborns [29].

In this study, 25(OH)D concentrations of the newborns were inversely correlated with birth weight. In turn, the SGA had higher values of 25(OH)D compared to the others. One of the plausible explanations for this seemingly paradoxical finding may be attributed to the percentage of body fat influencing circulating 25(OH)D

Fig. 3. Concentrations of 25(OH)D and alkaline phosphatase in newborns, according to the classification of weight for gestational age. Analysis of variance for 25 (OH)D ($p < 0.001$); SGA vs. AGA ($p < 0.001$); SGA vs. LGA ($p = 0.066$); AGA vs. LGA ($p = 0.830$). Analysis of variance for alkaline phosphatase ($p < 0.001$); SGA vs. AGA ($p < 0.001$); SGA vs. LGA ($p = 0.063$); AGA vs. LGA ($p = 0.730$). AGA, adequate for gestational age; SGA, small for gestational age; LGA, large for gestational age.



levels or vice versa [30, 31]. Newborns large and SGA have, respectively, a higher and lower percentage of body fat, which may interfere with the levels of 25(OH)D.

Recent studies suggest that vitamin D deficiency in early pregnancy influences the body composition of newborns and postnatal growth [32, 33]. On the other hand, Czech-Kowalska et al. [34] did not find relationship between lower maternal 25(OH)D serum levels with higher fat mass in their newborns. Depending on gestational age that the serum levels of 25(OH)D are evaluated, the results regarding anthropometry and body composition of the newborns could be different.

This study has some limitations, such as the cross-sectional design with a single 25(OH)D serum levels evalua-

tion, a risk of memory bias related to maternal habits, photoprotection, sun exposure, and vitamin supplementation.

In conclusion, this study showed strong positive correlation between maternal and neonatal 25(OH)D concentrations with higher values in newborns. The highest 25(OH)D concentrations were found in SGA term infants. We speculated these findings could be influenced by newborn body composition.

Acknowledgments

Board and Multidisciplinary Team of the Hospital Municipal University of São Bernardo do Campo.

Statement of Ethics

The study protocol was approved by The Human Research Ethics Committee of the ABC Faculty of Medicine, Santo André under opinion N° 1.813.560. Subjects (parents or guardians) have given their written informed consent.

Funding Sources

The study was partially self-financed and received financial support from the Federal University of Cariri and the ABC Faculty of Medicine.

Author Contributions

C.U.P.E., M.E.P.M., F.I.S.-S., and R.O.S.S.: participated in the study design; C.U.P.E., M.E.P.M., E.E.M., J.L.A.L., J.L.S.R., J.G., and C.M.N.: participated in the collection and analysis of samples and the interpretation of outcomes. All authors participated in the construction of the manuscript and approved the final version to be submitted for publication.

Disclosure Statement

The authors declare no conflicts of interest.

References

- 1 Fuleihan Gel-H, Bouillon R, Clarke B, Chakhtoura M, Cooper C, McClung M, et al. Serum 25-Hydroxyvitamin D Levels: Variability, Knowledge Gaps, and the Concept of a Desirable Range. *J Bone Miner Res*. 2015;30(7):1119–33.
- 2 van Schoor N, Lips P. Global Overview of Vitamin D Status. *Endocrinol Metab Clin North Am*. 2017 Dec;46(4):845–70.
- 3 Prentice S. They Are What You Eat: Can Nutritional Factors during Gestation and Early Infancy Modulate the Neonatal Immune Response? *Front Immunol*. 2017 Nov;8:1641.
- 4 Narchi H, Kochiyil J, Zayed R, Abdulrazzak W, Agarwal M. Maternal vitamin D status throughout and after pregnancy. *J Obstet Gynaecol*. 2010 Feb;30(2):137–42.
- 5 Bi WG, Nuyt AM, Weiler H, Leduc L, Santamaria C, Wei SQ. Association Between Vitamin D Supplementation During Pregnancy and Offspring Growth, Morbidity, and Mortality: A Systematic Review and Meta-analysis. *JAMA Pediatr*. 2018 Jul 1;172(7):635–45.
- 6 Saraf R, Morton SM, Camargo CA Jr, Grant CC. Global summary of maternal and newborn vitamin D status – a systematic review. *Matern Child Nutr*. 2016 Oct;12(4):647–68.
- 7 *Guideline: Vitamin D Supplementation in Pregnant Women*. Geneva: World Health Organization; 2012.
- 8 Pena HR, de Lima MC, Brandt KG, de Antunes MM, da Silva GA. Influence of preeclampsia and gestational obesity in maternal and newborn levels of vitamin D. *BMC Pregnancy Childbirth*. 2015 May;15(1):112.
- 9 Prado MR, Oliveira Fde C, Assis KF, Ribeiro SA, do Prado PP Junior, Sant'Ana LF, et al. Prevalência de deficiência de vitamina D e fatores associados em mulheres e seus recém-nascidos no período pós-parto. *Rev Paul Pediatr*. 2015;33(3):286–93.
- 10 Figueiredo ACC, Cocate PG, Adegboye ARA, Franco-Sena AB, Farias DR, de Castro MBT, et al. Changes in plasma concentrations of 25-hydroxyvitamin D and 1,25-dihydroxyvitamin D during pregnancy: a Brazilian cohort. *Eur J Nutr*. 2018 Apr;57(3):1059–1072.
- 11 Martins ME, Esmeraldo CU, Sabiá JP, Carvalho JH, Suano-Souza FI, Sarni RO. Vitamin D Postpartum Concentrations: Relationship with Nutritional Condition and Morbidities during Pregnancy. *J Pregnancy*. 2018 Sep;2018:1070528.
- 12 Institute of Medicine (US) and National Research Council. (US) Committee to Reexamine IOM Pregnancy Weight Guidelines; in: Rasmussen KM, Yaktine AL (eds). *Weight Gain During Pregnancy: Reexamining the Guidelines*. Washington (DC): National Academies Press (US); 2009.
- 13 Ballard JL, Khoury JC, Wedig K, Wang L, Eilers-Walsman BL, Lipp R. New Ballard Score, expanded to include extremely premature infants. *J Pediatr*. 1991 Sep;119(3):417–23.
- 14 Villar J, Cheikh Ismail L, Victora CG, Ohuma EO, Bertino E, Altman DG, et al.; International Fetal and Newborn Growth Consortium for the 21st Century (INTERGROWTH-21st). International standards for newborn weight, length, and head circumference by gestational age and sex: the Newborn Cross-Sectional Study of the INTERGROWTH-21st Project. *Lancet*. 2014 Sep;384(9946):857–68.
- 15 Holick MF, Binkley NC, Bischoff-Ferrari HA, Gordon CM, Hanley DA, Heaney RP, et al.; Endocrine Society. Evaluation, treatment, and prevention of vitamin D deficiency: an Endocrine Society clinical practice guideline. *J Clin Endocrinol Metab*. 2011 Jul;96(7):1911–30.
- 16 Sudhanshu S, Upadhyay P, Sahu M, Rawat V, Bhatia V. Sun exposure, UV irradiance and serum 25-hydroxycholecalciferol in pregnant women in rural north India. *Public Health Nutr*. 2017 Jul;20(10):1755–9.
- 17 Roth DE, Morris SK, Zlotkin S, Gernand AD, Ahmed T, Shanta SS, et al. Vitamin D Supplementation in Pregnancy and Lactation and Infant Growth. *N Engl J Med*. 2018 Aug;379(6):535–46.
- 18 Kassai MS, Cafeo FR, Affonso-Kaufman FA, Suano-Souza FI, Sarni RO. Vitamin D plasma concentrations in pregnant women and their preterm newborns. *BMC Pregnancy Childbirth*. 2018 Oct;18(1):412.
- 19 Arora S, Goel P, Chawla D, Huria A, Arya A. Vitamin D Status in Mothers and Their Newborns and Its Association with Pregnancy Outcomes: Experience from a Tertiary Care Center in Northern India. *J Obstet Gynaecol India*. 2018 Oct;68(5):389–93.
- 20 Workalemahu T, Badon SE, Dishy-Galitzky M, Qiu C, Williams MA, Sorensen T, et al. Placental genetic variations in vitamin D metabolism and birthweight. *Placenta*. 2017 Feb;50:78–83.
- 21 Aghajafari F, Field CJ, Rabi D, Kaplan BJ, Maggiore JA, O'Beirne M, et al.; APrON Study Team. Plasma 3-Epi-25-Hydroxycholecalciferol Can Alter the Assessment of Vitamin D Status Using the Current Reference Ranges for Pregnant Women and Their Newborns. *J Nutr*. 2016 Jan;146(1):70–5.
- 22 Barchitta M, Maugeri A, La Rosa MC, Maggiano San Lio R, Favara G, Panella M, et al. Single Nucleotide Polymorphisms in Vitamin D Receptor Gene Affect Birth Weight and the Risk of Preterm Birth: Results From the “Mamma & Bambino” Cohort and A Meta-Analysis. *Nutrients*. 2018 Aug;10(9):E1172.
- 23 Higashi T, Suzuki M, Hanai J, Inagaki S, Min JZ, Shimada K, et al. A specific LC/ESI-MS/MS method for determination of 25-hydroxyvitamin D3 in neonatal dried blood spots containing a potential interfering metabolite, 3-epi-25-hydroxyvitamin D3. *J Sep Sci*. 2011 Apr;34(7):725–32.
- 24 Ooms N, van Daal H, Beijers AM, Gerrits GP, Semmekrot BA, van den Ouweland JM. Time-course analysis of 3-epi-25-hydroxyvitamin D3 shows markedly elevated levels in early life, particularly from vitamin D supplementation in preterm infants. *Pediatr Res*. 2016 Apr;79(4):647–53.

- 25 Bailey D, Perumal N, Yazdanpanah M, Al Mahmud A, Baqui AH, Adeli K, et al. Maternal-fetal-infant dynamics of the C3-epimer of 25-hydroxyvitamin D. *Clin Biochem*. 2014 Jun;47(9):816–22.
- 26 Yılmaz B, Aygün C, Çetinoğlu E. Vitamin D levels in newborns and association with neonatal hypocalcemia. *J Matern Fetal Neonatal Med*. 2018 Jul;31(14):1889–93.
- 27 Wang H, Xiao Y, Zhang L, Gao Q. Maternal early pregnancy vitamin D status in relation to low birth weight and small-for-gestational-age offspring. *J Steroid Biochem Mol Biol*. 2018 Jan;175:146–50.
- 28 van der Pligt P, Willcox J, Szymlek-Gay EA, Murray E, Worsley A, Daly RM. Associations of Maternal Vitamin D Deficiency with Pregnancy and Neonatal Complications in Developing Countries: A Systematic Review. *Nutrients*. 2018 May;10(5):E640.
- 29 Sarma D, Saikia UK, Das DV. Fetal Skeletal Size and Growth are Relevant Biometric Markers in Vitamin D Deficient Mothers: A North East India Prospective Cohort Study. *Indian J Endocrinol Metab*. 2018 Mar-Apr; 22(2):212–6.
- 30 Sauder KA, Koeppen HJ, Shapiro AL, Kalata KE, Stamatoiu AV, Ringham BM, et al. Prenatal Vitamin D Intake, Cord Blood 25-Hydroxyvitamin D, and Offspring Body Composition: The Healthy Start Study. *Nutrients*. 2017 Jul;9(7):E790.
- 31 Josefson JL, Feinglass J, Rademaker AW, Metzger BE, Zeiss DM, Price HE, et al. Maternal obesity and vitamin D sufficiency are associated with cord blood vitamin D insufficiency. *J Clin Endocrinol Metab*. 2013 Jan; 98(1):114–9.
- 32 Egge-moen ÅR, Jenum AK, Mdala I, Knutsen KV, Lagerlöv P, Sletner L. Vitamin D levels during pregnancy and associations with birth weight and body composition of the newborn: a longitudinal multiethnic population-based study. *Br J Nutr*. 2017 Apr;117(7):985–93.
- 33 Santamaria C, Bi WG, Leduc L, Tabatabaei N, Jantchou P, Luo ZC, et al. Prenatal vitamin D status and offspring's growth, adiposity and metabolic health: a systematic review and meta-analysis. *Br J Nutr*. 2018 Feb;119(3): 310–9.
- 34 Czech-Kowalska J, Gruszfeld D, Jaworski M, Bulsiewicz D, Latka-Grot J, Pleskaczynska A, et al. Determinants of Postpartum Vitamin D Status in the Caucasian Mother-Offspring Pairs at a Latitude of 52°N: A Cross-Sectional Study. *Ann Nutr Metab*. 2015;67(1):33–41.

UNIVERSIDADE FEDERAL DO RIO GRANDE DO NORTE
CENTRO DE CIÊNCIAS DA SAÚDE
PROGRAMA DE PÓS-GRADUAÇÃO EM NUTRIÇÃO

SELEÇÃO DE MESTRADO ACADÊMICO EM NUTRIÇÃO – 2020

LINHA DE DIAGNÓSTICO E INTERVENÇÃO NUTRICIONAL

CAPA DA PROVA ESCRITA

INSTRUÇÕES	
1	O mascaramento da prova escrita será realizado por meio do sorteio de um CÓDIGO. Posteriormente, o candidato deverá preencher o formulário que contém o CÓDIGO com o nome completo e assinatura, e deposita-lo em um envelope que será lacrado e assinado pelos Fiscais.
2	Preencher os campos com o CÓDIGO nos seguintes locais: capa da Prova Escrita e páginas destinadas para responder as questões dissertativas . A falta deste procedimento impedirá a correção da prova, culminando com a eliminação do candidato. A identificação do candidato em qualquer outro local da prova resultará na eliminação do Processo Seletivo
3	Essa Prova Escrita contém 02 (duas) questões dissertativas.
4	Quando o Fiscal autorizar, verifique se a prova está completa e sem imperfeições gráficas que impeçam a leitura. Detectado algum problema, comunique-o imediatamente ao Fiscal. Não destaque nenhuma folha da prova.
5	As questões dissertativas serão avaliadas considerando apenas o que estiver escrito nas páginas pautadas, utilizando caneta esferográfica azul ou preta. Se necessário, solicite folhas adicionais ao fiscal. Escreva de modo legível.
6	Os rascunhos não serão considerados para efeito de correção.
7	Os candidatos dispõem de, no máximo, 4 (quatro) horas para responder toda prova escrita.
8	Antes de retirar-se definitivamente da sala, devolva ao Fiscal a prova, juntamente com os rascunhos destinados para responder as questões dissertativas.

QUESTÕES DISSERTATIVAS

Leia atentamente as sessões de “Materiais e Métodos” e “Resultados” do artigo intitulado “*Vitamin D in Term Newborns: Relation with Maternal Concentrations and Birth Weight*”, publicado no periódico *Annals of Nutrition & Metabolism* (2019), de autoria de Esmeraldo, C. U.P. et al. (Ann Nutr Metab 2019;75:39–46. doi: 10.1159/000502044).

Com base nessas informações, responda as questões dissertativas que se seguem:

- (1) Interprete e descreva os resultados apresentados na Tabela 1 e nas Figuras 1, 2 e 3.
- (2) Elabore um resumo estruturado sobre o artigo, contendo os seguintes itens: Introdução, Objetivos, Métodos, Resultados e Conclusão.

Clinical Study: Research Article

Annals of
**Nutrition &
Metabolism**Ann Nutr Metab 2019;75:39–46
DOI: 10.1159/000502044Received: November 16, 2018
Accepted: July 3, 2019
Published online: August 7, 2019

Vitamin D in Term Newborns: Relation with Maternal Concentrations and Birth Weight

Carmem U.P. Esmeraldo^a Maria Eliana P. Martins^a Evanira R. Maia^a
Jéssica Lissandra A. Leite^a José Lucas S. Ramos^b Jucier Gonçalves Jr^c
Cicera M. Neta^c Fabíola Isabel Suano-Souza^{d,e} Roseli O.S. Sarni^d^aPediatrics Department of Federal University of Cariri, Juazeiro do Norte, Brazil; ^bHigher School of Sciences of the Santa Casa de Misericórdia de Vitória, Vitória, Brazil; ^cFaculty of Juazeiro do Norte, Juazeiro do Norte, Brazil;^dPediatrics Department of ABC Faculty of Medicine, Santo André, São Paulo, Brazil; ^ePediatrics Department of Federal University of São Paulo, São Paulo, Brazil

Materials and Methods

A cross-sectional study was performed between October and December 2016 in a maternity hospital of Crato, State of Ceará (latitude 07° 14' 03 "S). The Human Research Ethics Committee of the ABC Faculty of Medicine, Santo André approved the study under number 1.813.560. A recently published study with the same sample described maternal 25 (OH)D concentrations and associated nutritional status with the presence of diseases during gestation [11].

The sample included, consecutively, 225 term newborns and their mothers. Newborns who were sent to the neonatal intensive care unit, with severe malformations, genetic syndromes, and neonatal hypoxia were excluded.

Mothers were submitted to a standardized questionnaire with information on socioeconomic conditions, skin color (self-reported), sun exposure, photoprotection, diseases during pregnancy, and use of vitamin/mineral supplements. The prenatal card was checked for complete information about laboratory tests and anthropometric measurements.

Weight and height data were used to calculate the pregestational body mass index (BMI, kg/m²), which was classified as underweight (<18.5 kg/m²), normal (18.5–24.9 kg/m²), overweight (25–29.9 kg/m²), and obesity (≥30 kg/m²). Weight gain during pregnancy was calculated and classified as low, adequate, and high [12].

Information on weight, length, and head circumference of the newborns were collected within the first 24 h after delivery. The gestational age was calculated according to the date of the last menstruation; alternatively, we employed the first-trimester ultrasonography data and, finally, the newborn's clinical evaluation [13]. The newborns were classified by gestational age, using INTERGROWTH-21st [14].

Blood samples were taken within 24 h after delivery. We collected 5 mL of blood through peripheral venipuncture of the mothers and their newborns, which were photoprotected, refrigerated, and sent to the local clinical laboratory, where they were centrifuged and serum levels of 25(OH)D (25[OH]D₂ and 25[OH]D₃; Electrochemiluminescence, with UniCel DXI 800 Immunoassay System, Beckman Coulter®), Calcium, Phosphorus, Magnesium, and Alkaline Phosphatase (Reflectance Spectrophotometry, Vitros 5600 Integrated System, Ortho-Clinical Diagnostics, Raritan, NJ, USA) were dosed. The 25(OH)D serum concentrations <20 ng/mL were defined as deficiency; 20–30 ng/mL, as insufficiency; and >30 ng/mL, as sufficiency [13]. All calculations followed the best clinical practice. The mean of 19.9 ng/mL (SD 0.948 ng/mL and an intra-control CV of 4.8%) was the referred reproducible value to measure the 25(OH)D. For the same parameter, the intermediate precision was 19.9 ng/mL (SD 1.23 ng/mL and an intra-control CV of 6.2%). The lowest detectable value (sensitivity) of the method was 1.25 ng/dL.

Statistical Analysis

A spreadsheet was created in Excel®, containing information on identification, general characteristics, data from the questionnaires on mother and newborns, anthropometric data, and laboratory test results. The spreadsheet was revised, consolidated, and imported into the Statistical Package for Social Science, version 25.0 (IBM®) for statistical analyses. The categorical variables were shown as absolute number and percentage, compared using the chi-square test; the continuums were tested for their normality with Shapiro-Wilk test, showed as mean (SE) and compared by Student *t* test. Pearson's correlation was used to assess the correlation between maternal, newborn, and birth weight 25(OH)D serum levels. Statistical significance was set at *p* < 0.05.

Based on data from a previous study similar to this [15], the number of included newborns has the power to detect a difference of 3 ng/mL of 25(OH)D, with a CI of 95%.

Table 1. General characteristics and serum levels of 25(OH)D, calcium, phosphorus, magnesium, and alkaline phosphatase of newborns ($n = 225$)

Variable	n (%) or mean \pm SD
Gender	
Female	106 (47.1)
Male	119 (52.9)
Birth weight, g	3,198 \pm 421.4
Length at birth, cm	48.1 \pm 1.9
Classification	
Low weight	11 (4.9)
Adequate weight	208 (92.4)
High weight	6 (2.7)
Head circumference, cm	34.4 \pm 1.3
Gestational age, weeks	39.1 \pm 1.1
Classification	
Small	20 (8.9)
Adequate	193 (85.8)
Large	12 (5.3)
Vitamin D metabolism	
25(OH)D	48.7 \pm 15.2
<20 ng/mL	3 (1.3)
20–30 ng/mL	15 (6.7)
>30 ng/mL	207 (92.0)
Calcium, mg/dL	9.2 \pm 0.8
Phosphorus, mg/dL	7.7 \pm 1.8
Magnesium, mg/dL	1.9 \pm 0.5
Alkaline phosphatase, U/L	155.2 \pm 44.7

Table 2. Characterization of puerperae included in the study ($n = 225$)

Variable	n (%) or mean \pm SD
Maternal age, years	25.6 \pm 6.6
Paternal age, years	28.9 \pm 7.9
Ethnicity	
White skin	47 (20.9)
Dark skin	178 (79.1)
Maternal work	
Housewife	55 (24.4)
Urban	127 (56.4)
Rural	43 (19.1)
Maternal schooling, full years of study	
<4 years	197 (87.6)
4–8 years	13 (5.8)
>8 years	15 (6.7)
People living in the household	4.6 \pm 2.2
Number of gestations	2.1 \pm 1.6
Primiparous, n (%)	108 (48.0)
Prenatal care visits	7.8 \pm 2.1
Pregestational BMI, kg/m ²	
<18.5	19 (8.5)
18.5–25	128 (57.1)
25–30	49 (21.9)
≥ 30	28 (12.5)
Weight gain during pregnancy	
Adequate	83 (36.9)
Low	70 (31.1)
High	71 (31.6)
Tobacco use	9 (4.0)
Alcohol use	11 (4.9)
Multivitamin with vitamin D (cholecalciferol)	20 (8.9)
Folic acid	198 (88.0)
Iron	204 (90.7)
Regular sun protection	44 (19.6)
Regular sun exposure	144 (64.0)
Hours/days regular sun exposure	1.9 \pm 1.0
Diseases during pregnancy	
Urinary infection	72 (32)
Gestational-specific hypertensive disease	20 (8.9)
Gestational diabetes mellitus	2 (0.9)
Bleeding	17 (7.6)
Type of delivery	
Vaginal	61 (27.1)
Surgical (caesarean)	164 (72.9)
25(OH)D concentrations, ng/mL	26.0 \pm 6.8
25(OH)D concentrations, ng/mL	
<20	43 (19.1)
20–30 ng/mL	124 (55.1)
>30 ng/mL	58 (25.8)

BMI, body mass index; PIH, pregnancy-induced hypertension; GDM, gestational diabetes mellitus.

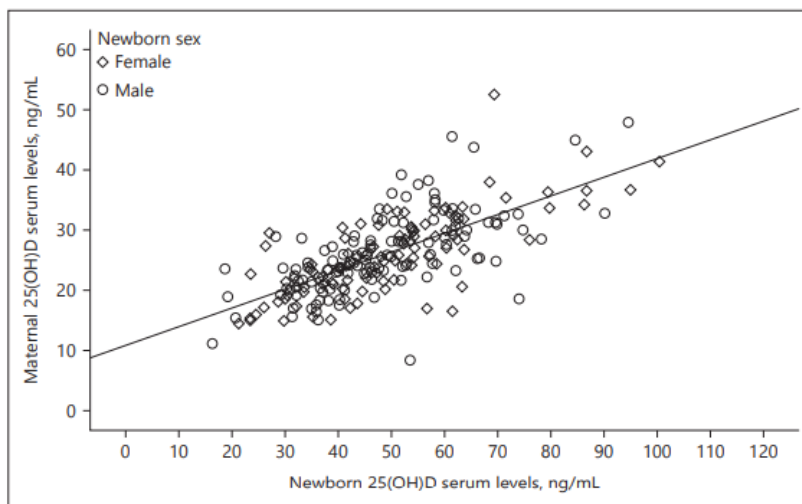


Fig. 1. Correlation of maternal and neonatal 25(OH)D (ng/mL) serum levels. Pearson's correlation significance level: all ($r = 0.697$; $p < 0.001$); males ($r = 0.653$; $p < 0.001$); females ($r = 0.746$; $p < 0.001$).

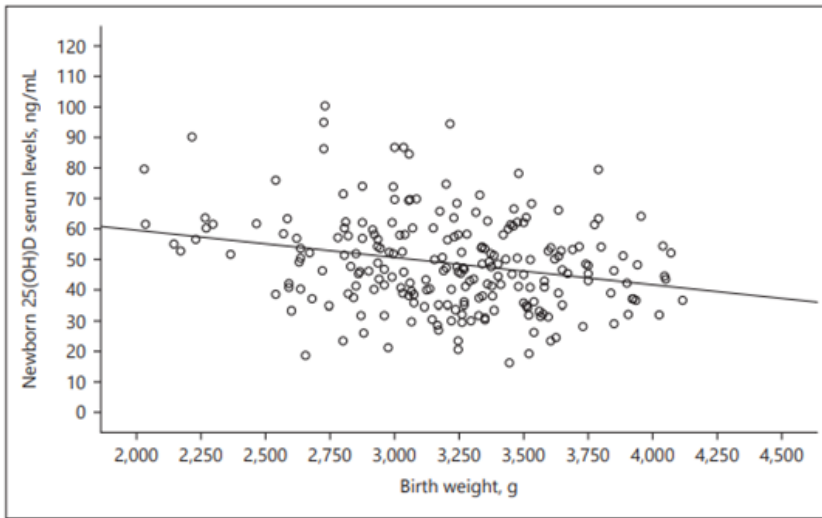


Fig. 2. Correlation of newborn 25(OH)D (ng/mL) serum levels with birth weight. Pearson correlation; $r = -0.249$; $p < 0.001$.

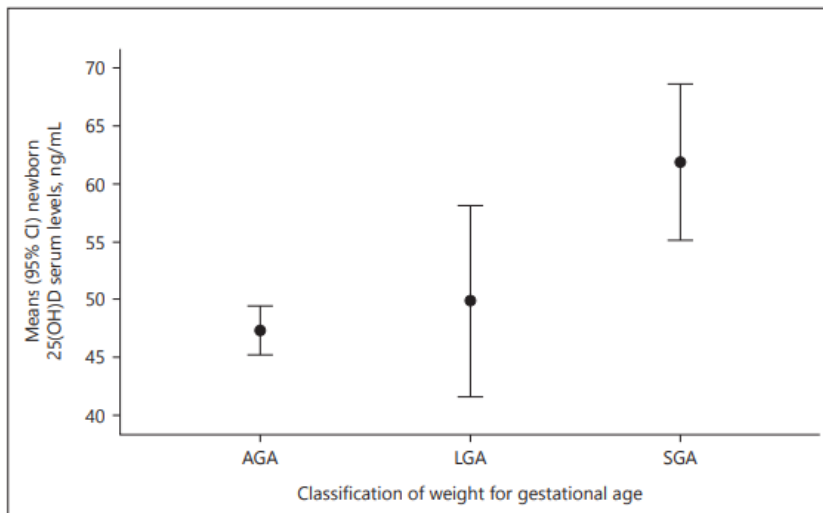


Fig. 3.1. Concentrations of 25(OH)D and alkaline phosphatase in newborns, according to the classification of weight for gestational age. Analysis of variance for 25 (OH)D ($p < 0.001$); SGA vs. AGA ($p < 0.001$); SGA vs. LGA ($p = 0.066$); AGA vs. LGA ($p = 0.830$).

AGA, adequate for gestational age; LGA, large for gestational age; SGA, small for gestational age.

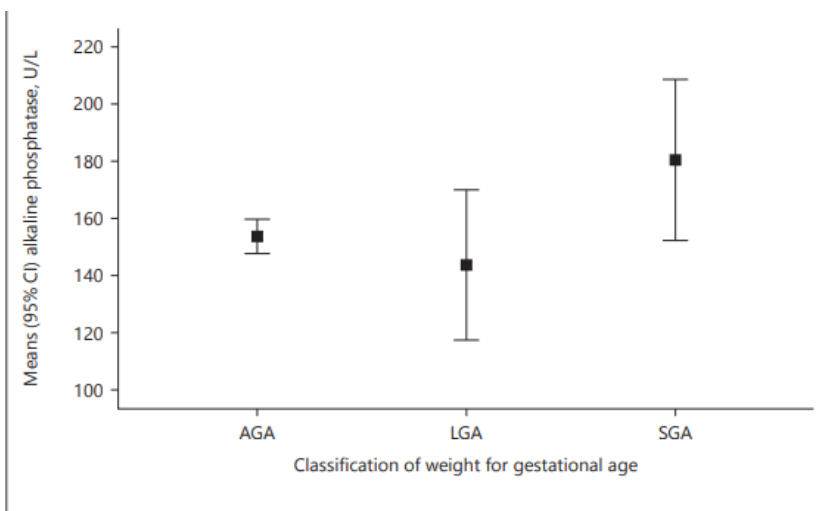


Fig. 3.2. Analysis of variance for alkaline phosphatase ($p < 0.001$); SGA vs. AGA ($p < 0.001$); SGA vs. LGA ($p = 0.063$); AGA vs. LGA ($p = 0.730$).

AGA, adequate for gestational age; LGA, large for gestational age; SGA, small for gestational age.

CÓDIGO:

[illegible]

CÓDIGO:

[illegible]

CÓDIGO:

[illegible]

Utilize o espaço pautado a seguir para responder a questão 2. Não será considerada para correção nenhuma letra ou palavra escrita fora deste espaço.

1	
2	
3	
4	
5	
6	
7	
8	
9	
10	
11	
12	
13	
14	
15	
16	
17	
18	
19	
20	
21	
22	
23	
24	
25	
26	
27	
28	
29	
30	
31	
32	
33	
34	
35	

UNIVERSIDADE FEDERAL DO RIO GRANDE DO NORTE
CENTRO DE CIÊNCIAS DA SAÚDE
PROGRAMA DE PÓS-GRADUAÇÃO EM NUTRIÇÃO

Seleção de Mestrado Acadêmico em Nutrição – 2020

CHAVE DE RESPOSTA - QUESTÃO DISSERTATIVA – Linha de Diagnóstico e Intervenção Nutricional -

	Sugestão de pontuação	Chave de resposta
Tabela 1	1,0	<p>Descreva e interprete os resultados na Tabela 1 e nas Figuras 1, 2 e 3.</p> <p>A tabela 1 mostra as características gerais dos recém-nascidos e as concentrações séricas de Vitamina D [25(OH)], cálcio, fósforo, magnésio, e de fosfatase alcalina.</p> <p>Dos 225 recém-nascidos, 52,9% eram do sexo masculino, a média de peso ao nascer foi de 3,198g (DP 421,4) e a idade gestacional foi 39,1 semanas (DP 1,1). Destes, 4,9% apresentaram baixo peso, 8,9% eram pequenos para a idade gestacional e 5,3% grande para idade gestacional (<u>OU 85,8% eram adequados para idade gestacional</u>) e 92% apresentaram concentrações séricas superiores a 30 ng/mL de vitamina D (25OHD).</p> <p><u>O valores médios de cálcio foi 9,2(DP 0,8) mg/dL, de magnésio 1,9 (DP 0,5) mg/dL, de fósforo 7,7 (DP 1,8) mg/dL e de fosfatase alcalina 155,2 (DP 44,7) U/L.</u></p>
Figura 1	1,0	<p>A figura 1 mostra a correlação entre as concentrações séricas de Vitamina D (25OH, ng/mL) materna e neonatal.</p> <p>Observaram-se correlações <u>moderadas/fortes</u>, positivas e significativas entre as concentrações de 25OHD das mães e a dos neonatos. Quanto maior a concentração sérica de Vitamina D (25OHD) materna, maiores as concentrações de 25OHD dos recém-nascidos ($r=0,627$; $p<0,001$), tanto para o sexo masculino ($r=0,653$; $p<0,001$), quanto para o sexo feminino ($r=0,746$; $p<0,001$).</p>
Figura 2	1,0	<p>A figura 2 mostra a correlação entre as concentrações séricas de Vitamina D (25OH, ng/mL) de recém-nascidos com o peso ao nascer.</p> <p>Evidenciou-se uma a correlação <u>fraca e negativa</u> ($r=-0,249$; $p<0,001$) entre as concentrações séricas de Vitamina D (25OHD) e o peso ao nascer.</p> <p>OU</p> <p>Verificou-se que quanto maiores as concentrações de vitamina D (25OHD), menores valores de peso ao nascer foram observados ($r=-0,249$; $p<0,001$).</p> <p>OU</p> <p>Evidenciou-se que as concentrações séricas de vitamina D (25OHD) foram inversamente correlacionadas com o peso ao nascer ($r=-0,249$; $p<0,001$).</p>
Figura 3 Vale 1,0	0,5	<p>Figura 3.1</p> <p>A figura 3.1 mostra as médias e respectivos intervalos de confiança dos níveis séricos de concentração da vitamina D (25OH, ng/mL) em recém-nascidos em relação à classificação do peso por idade gestacional.</p> <p>Observaram-se valores médios significativamente maiores das concentrações séricas de vitamina D (25OHD) nos recém-nascidos pequenos para a idade gestacional, em relação aos que tinham peso adequado para a idade gestacional ($p=0,001$). <u>Não houve diferença significativa entre as concentrações séricas de vitamina D (25OHD) entre os neonatos pequenos e grandes para a idade gestacional ($p=0,066$), bem como entre os neonatos</u></p>

		adequados e grandes para a idade gestacional ($p=0,830$).
	0,5	<p>Figura 3.2</p> <p>A figura 3.2 mostra as médias e respectivos intervalos de confiança da concentração de fosfatase alcalina em recém-nascidos em relação à classificação do peso por idade gestacional.</p> <p>Observaram-se maiores valores médios nas concentrações de fosfatase alcalina nos recém-nascidos pequenos para a idade gestacional, em relação aos que tinham peso adequado para a idade gestacional ($p=0,001$). <u>Não houve diferença significativa entre as concentrações de fosfatase alcalina entre os neonatos pequenos e grandes para a idade gestacional ($p=0,063$), bem como entre os neonatos adequados e grandes para a idade gestacional ($p=0,730$).</u></p>
Resumo	Vale 6,0	<p>Resumo</p> <p>Introdução (0,5): Contextualizar a temática utilizando as palavras chaves do título.</p> <p>A concentração de Vitamina D em recém-nascidos à termo pode estar relacionada com a concentração de Vitamina D materna e com o peso ao nascer.</p> <p>OU A concentração de Vitamina D materna e o peso ao nascer podem influenciar na concentração de Vitamina D de recém-nascidos à termo.</p> <p>OU A deficiência de vitamina D durante a gestação pode levar a complicações para a mulher e o feto, como restrição intrauterina de crescimento e prematuridade.</p> <p>Objetivos (1,5):</p> <p>Avaliar as concentrações séricas de Vitamina D em recém-nascidos a termo e a sua relação com o peso ao nascer e a concentração desta vitamina de suas mães.</p> <p>Métodos (1,0): Estudo seccional, conduzido com 225 recém-nascidos e suas mães. Foram coletadas informações socioeconômicas, de saúde materno-infantil, período gestacional e de antropometria dos recém-nascidos de uma maternidade no interior do nordeste brasileiro. As concentrações séricas de 25OHD foram dosadas, bem como as de cálcio, fósforo, magnésio e fosfatase alcalina. <u>As concentrações de 25OHD < 20ng/mL foram definidas como deficiente; 20-30ng/mL, como insuficiente e > 30ng/mL, como suficiente.</u></p> <p>Resultados (1,5): Dos 225 recém-nascidos incluídos no estudo, 119 (52,9%) eram do sexo masculino, a média de peso ao nascer foi de 3.198g (DP 421,4) e a idade gestacional foi 39,1 semanas (DP 1,1). Destes, 8,9% eram pequenos para a idade gestacional e a idade gestacional foi de 39,1 semanas (DP 1,1). Em 92% dos recém-nascidos as concentrações séricas foram superiores a 30 ng/mL de vitamina D (25OHD). Verificaram-se correlações positivas entre a concentração sérica de Vitamina D (25OHD) materna, e a dos recém-nascidos ($r=0,627$; $p<0,001$), independente do sexo. Observou-se ainda que a concentração sérica de Vitamina D (25OHD) foi inversamente correlacionada com o peso ao nascer ($r=-0,249$; $p<0,001$). Foram verificados valores médios significativamente maiores das concentrações séricas de Vitamina D (25OHD) <u>e fosfatase alcalina</u> nos recém-nascidos pequenos para a idade gestacional em relação aos que tinham peso adequado para a idade gestacional (<u>ambos</u> $p=0,001$).</p> <p>Conclusões (1,5): Estes resultados demonstram correlação positiva entre as concentrações de vitamina D materna e dos recém-nascidos, e inversamente proporcional ao peso ao nascer. Destaca-se que maiores valores médios de vitamina D foram verificados em recém-nascidos pequenos para a idade gestacional.</p>